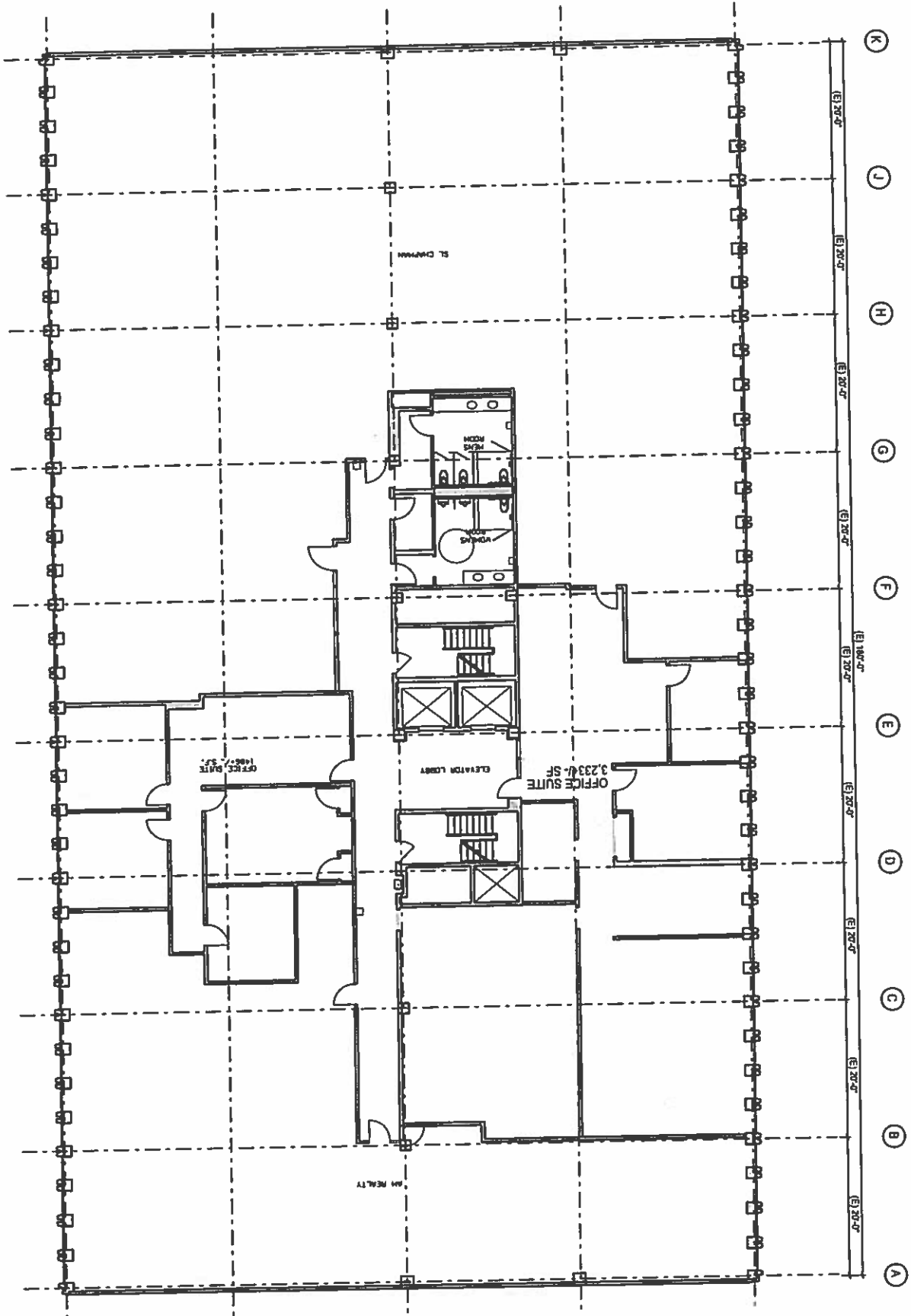
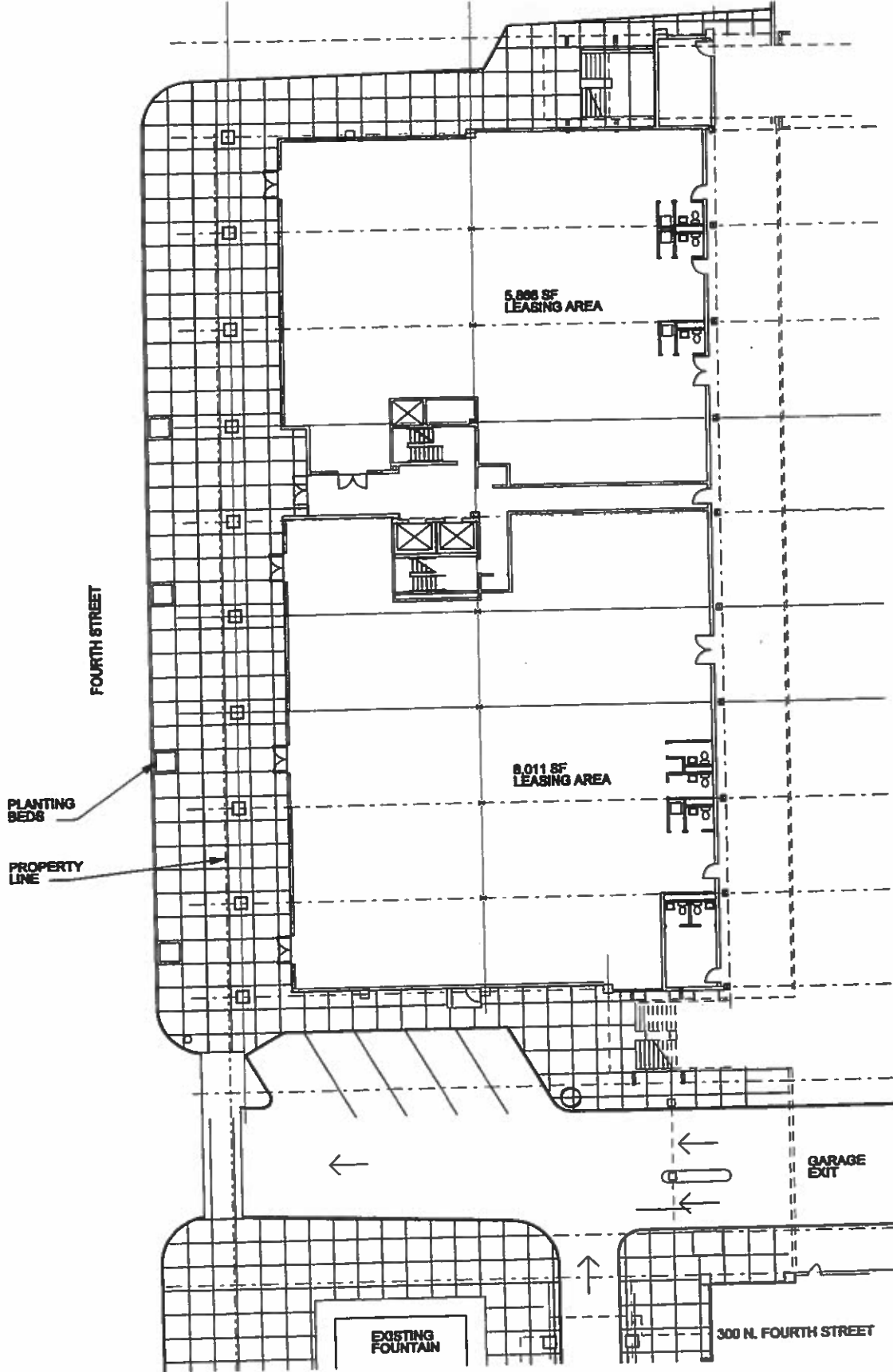


NOTE: DIMENSIONS NOTED WITH "E" ARE EXISTING DIMENSIONS AND SHALL BE VERIFIED IN THE FIELD

Level 3 - Floor Plan

330 North 4th Street, St. Louis, MO 63102

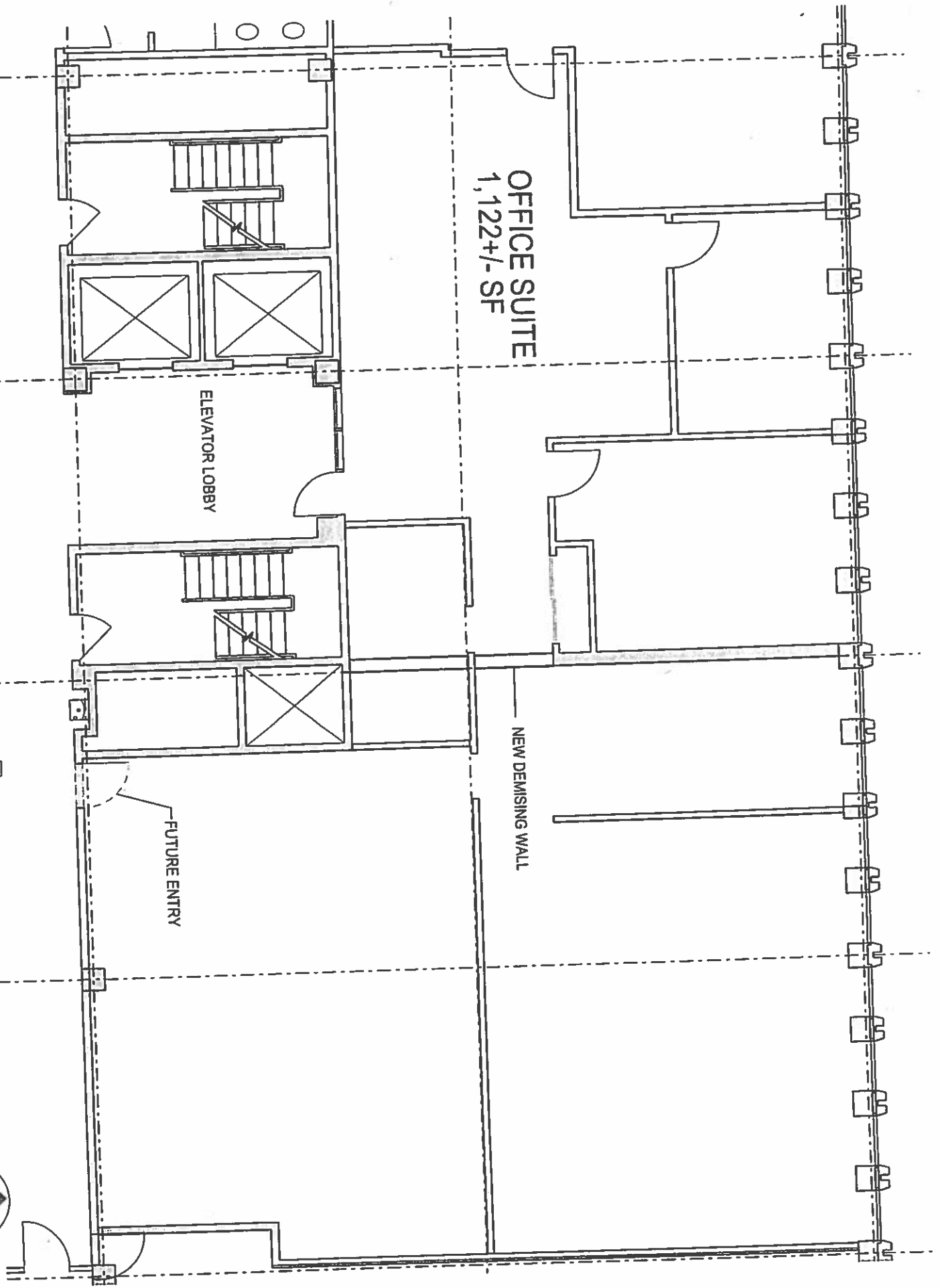




**330 N. Fourth Street
Middle Commercial Building : Plan**



1"=30'



OFFICE SUITE
1,122+/- SF

ELEVATOR LOBBY

NEW DEMISING WALL

FUTURE ENTRY

Level 3 - Floor Plan West Suite (Alternate Option)
1/8" = 1'-0"

330 North 4th Street, St. Louis, MO 63102

